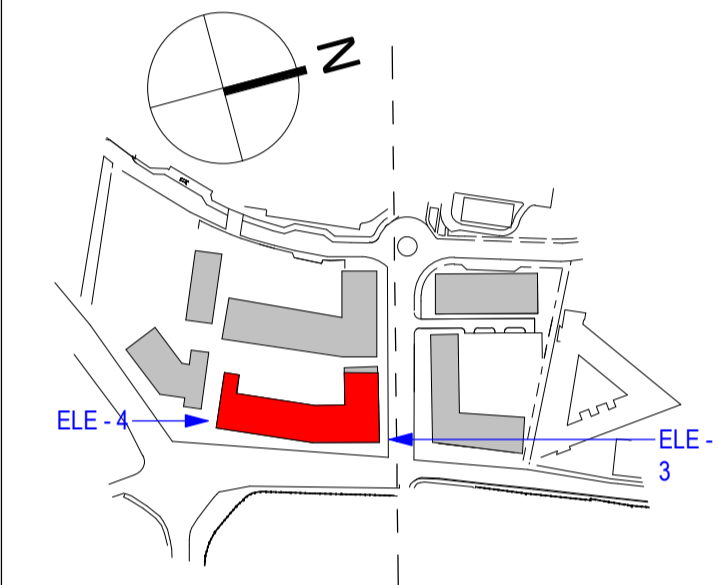


Notes:  
DO NOT SCALE FROM THIS DRAWING. USE FIGURED DIMENSIONS IN ALL CASES. VERIFY DIMENSIONS ON SITE AND REPORT ANY DISCREPANCIES TO THE ARCHITECTS IMMEDIATELY. THIS DRAWING TO BE READ IN CONJUNCTION WITH THE ARCHITECTS SPECIFICATION. © THIS DRAWING IS COPYRIGHT AND MAY ONLY BE REPRODUCED WITH THE ARCHITECTS PERMISSION.

Drawing Notes:

**Materials for Development**

- 1 Selected Nap Render Finish.
- 2 Selected Brick Finish.
- 3 Selected Metal Roof Finish.
- 4 Selected Windows & Doors.
- 6 Selected Polyester Powder Coated High Performance Glazing System.
- 10 Selected Entrance Canopy.
- 12 Selected Steel Railings To Balconies.
- 16 Proposed Landscaping. Refer to Landscape Architects Drawings.
- 17 Wall & Railings. Refer to Landscape Architects Drawings.
- 23 Own-Door Access Units.
- 32 Residential Block Entrance.
- 35 Selected Metal Louvered Screen.
- 36 Selected Metal Fins/Brise-Soleil.



**3 BLOCK A - NORTH FACADE**  
1 : 200



**4 BLOCK A - SOUTH FACADE**  
1 : 200



A	OCT 2019	OM	STAGE 3 APPLICATION
---	----------	----	---------------------

Rev	Date	DRN	Description
-----	------	-----	-------------

Reddy Architecture + Urbanism  
Dartny Road  
Dublin 6, D06 Y0E3  
T: +353 (0)1 4987000  
W: www.reddyarchitecture.com  
E: info@reddyarchitecture.com

Client Details:  
GLENVEAGH LIVING

Project Details:  
KNOCKNACARRA DISTRICT CENTRE,  
RAHOON, GALWAY.

Drawing Title:  
Block A Elevations 02

Job No P18-179	Date OCT 19	Scale@A1 1 : 200
Status FOR PLANNING	Drawn By: O.MORGAN	
Purpose PLANNING PERMISSION	Checked By: M.FREANEY	
Drawing Number P18179-RAU-ZZ-XX-DR-A-SLP-7201	Revision A	